

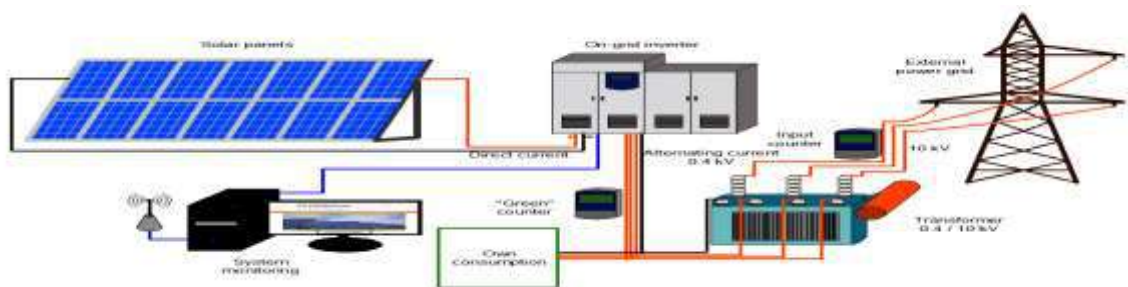
OUR PROFILE

Sintmond Technical Services was registered in 2004 to offer supplies and services solutions in the Power Plant and Industrial sectors. In 2010, the company was incorporated as Sintmond technical Services Ltd and finally in 2012 rebranded to Sintmond Group Ltd, in short SGL, to offer EPC/EPCM/BOOT/Turnkey services in;

ENERGY DIVISION

Our focus is in the whole stream of energy related projects from Oil & Gas Facilities, power plants, pipelines, transmission lines and renewable energy (solar grid-tie up, wind and Biomass).. The scope of work carried out by SGL is determined by the extent of the local content required in the project. We strategically partner with international companies with experience and capability and play the role of local partners. In this arrangement, our company benefits from the knowledge transferred from the international partners to our Engineers and technicians. We also hold exclusive agency for some international companies where we market and sell their products at agreed commissions. Our other services include energy systems integration, e.g conversion of waste to energy, modern plant smart monitoring systems, cleaning systems for solar panels, equipment hire and outsourcing services. Other include Dry Ice Blasting for Gas Turbine Cleaning.

Our company is registered with the relevant authorities like ERC, (V1, V2, C1) and NCA 1 for Mechanical Engineering services (Boilers, Gasification Plants and pressure vessels), NCA 3(Water works) NCA3 Road works and NCA3 Building works. All our services in this division are on EPC (Engineering, Procurement and Construction) basis and in areas like solar power, we include O&M (Operation and Maintenance)



In Oil and Gas we offer supply and installation of flow meters and intelligent metering solutions. Our company is the sole distributor of Satam mass flow, turbine, loading,

unloading, skid mounted, on-board, PD and ultrasonic flow meters. We have supplied to Kenya Pipeline, Total Kenya and other private oil marketers.

METERING SOLUTIONS



Drilling Simulators

We are local agents of UK Drill Sim who offer supply and services for drilling simulation of Oil & Gas and Geothermal applications.



INFRASTRUCTURE DIVISION

In this division, we mainly offer supplies and services associated with roads, railways, dams, airports, mining, irrigation and agricultural applications. In the same model of EPC, we are able to offer solutions based on the clients need. Currently we are supplying modern guardrails with enhanced safety, roller barriers, Mesh fence, solar street lights and sound barriers. The main advantage of our products is that they are designed to last longer and are affordable. Our speciality roller barrier is superior to ordinary barriers yet offers little damage to the vehicle as well.



We have NCA 3 registration certificates for road, water and building works. SGL is a niche market company where we are always creating improvements on existing platforms. Currently we are studying the usage of plasma leachate aggregate that will be produced by our MSW plant as a foundation material for road works and other subsoil applications. Our ICT department is also looking into ways of enhancing transportation services through usage of smart and intelligent gadgets that will result in efficient movement of passengers and cargo. Some of them include traffic management systems, routing and scheduling service delivery vehicles etc. In the rail industry, we are able to offer loading and offloading platforms, fixed or portable for bulk cargo handling as well as railway line inspection and maintenance services and equipment, train washing systems among others.

Civil Works





Train Washing Systems



Mechanical and Electrical Installation works





INSPECTIONS: STATUTORY, NON-DESTRUCTIVE TESTING & ENGINEERING SERVICES

In this Division we offer statutory inspection services for Boilers, Pressure vessels, Lifting equipment and refrigeration plants. We have a team of authorized Government inspectors who specialize in their respective areas of inspection with over 20yrs of experience. We also offer modern inspection services like Non-Destructive Testing of materials, Plants and welds including X-Ray, Ultrasonic, Magnetic Particle testing, Die Penetrant Inspections and Pigging services- Pipeline Inspection Gauging (MFL ,UTCD and UTML, Automated Corrosion Mapping (AUT),Automated Time of Flight Diffraction (TOFD),Ultrasonic Phased Array Examination (PAUT),Long Range Ultrasonic Testing (LRUT),External Laser Scanning & Imaging, Alternating Current Field Measurement (ACFM),Tank Floor MFE Inspection (MFE),Internal Rotary Tube Inspection (IRIS),Wire Rope Testing,3rd Party inspection/QA/QC, Tank Inspection & Cleaning, OTIS – In Service Robotic Tank Inspection, Unmanned Tank Cleaning, Permanent Repair (includes underwater),Pipeline Integrity & Leak Detection Systems: (Direct Assessment (ECDA, ICDA, SCCDA, CDA, Close Interval Potential Survey (CIPS),Direct Current Voltage Gradient Survey (DCVG),Pipeline Current Attenuation Survey, Pipeline Depth of Cover & Survey, Pipeline Right of Way GPS Survey:) Failure Root Cause Analysis, Pipeline Integrity Data Integration and Fitness For service. Our services are normally in line with API, API RP, ASME, ASNT, ASTM, BS, AGA3, and ANSI among others.

Inspections Photo gallery





We are registered by NEMA to offer Solid Waste Recycling and Disposal services and we do this through our facility called ARF (Advanced Recycling Facility). This is the only registered facility in Kenya specifically offering lighting bulbs recycling and disposal. SGL is also the only company registered by NAID- National Association for Information Destruction) (**NAID**[®] is the international trade association for companies providing information destruction services). We have so far recycled in excess of 5million pieces of all types of bulbs, out of which 4.25million was done on behalf of Kenya Power. They (KPLC) had accumulated the incandescent bulbs after their bulb exchange programme which was conducted throughout the country in an effort to reduce power demand and encourage households to adopt the more energy efficiency bulbs called CFLs. Our facility has machine that crushes, separates the components and recycle them into glass and metals.

Bulbs contain hazardous elements like lead oxide and mercury and therefore they should be disposed off in a manner that they don't harm the environment. Fluorescent lamps are an energy-efficient lighting option, using only 20 to 25% of the energy required for incandescent and other lighting technologies. Installation of high-efficiency lamps reduces the demand for electricity, which in turn reduces the amount of mercury and greenhouse gas (GHG) emissions. There are several different kinds of fluorescent lamps, including linear tubes, U-shaped lamps, and compact fluorescent lamps (CFLs). The amount of mercury in a fluorescent lamp varies, depending on the type of lamp, manufacturer and date of manufacture, but typically ranges between 1.7 milligrams and 15 milligrams. Although manufacturers have greatly reduced the amount of mercury used in fluorescent lamps over the past 20 years and are currently taking additional steps to further reduce their mercury content, mercury is an essential component to fluorescent lamps and cannot be eliminated completely. Mercury is not released when lamps are intact or in use; exposure is possible only when a lamp has been broken. When a lamp is broken some of the mercury in the bulb

is immediately released into the air as mercury vapour. In addition, if a broken bulb is not cleaned up, or if it is cleaned up improperly, additional mercury vapour will be released into the air over time.

The energy saving bulbs also have other hazardous elements contained in the electronic circuit which is similar to other electronic gadgets like computers, laptops, phones commonly referred to as E-WASTE. These elements include hexavalent chromium, Phthalates, dioxins etc. We offer a comprehensive, integrated and efficient management, recycling and disposal services for all types of Electrical and Electronic waste at a reasonable fee. We don't just pick gadgets and mine the valuables and call it recycling and disposal, NO. We do more than that.

National and County Government agencies manage some of the most confidential digital information affecting national security, day-to-day infrastructure maintenance and privacy of citizens. Ensuring data security and destruction of confidential information on digital storage devices can be extremely important during IT asset disposition, especially when equipment holds data involving national defence, contracts, research or planning. Professional firms (corporates that deal with confidential information) like Banks, Health care, Insurance, Defence, Business, Electronics, Aerospace, Energy Utilities, Telecommunication Companies, Infrastructure Agencies, tend to outgrow their IT equipment every few years as technology advances. However, replacing outdated equipment can introduce data and environmental risks. Businesses can count on our recycling solutions to securely manage disposition of IT assets and guarantee 100% destruction of confidential information left on obsolete assets, whether these assets are leased or company owned. Our operations are environmentally responsible and we provide asset and data destruction reporting to meet corporate compliance requirements.

Our services include degaussing, secure data wiping, hard drive/SSD/ HDD/ Tapes etc destruction and shredding both onsite and offsite. Major items for recycling and disposal include Computers, Laptops, Transmitters and receivers, Power amplifiers, Antennas and cables, Fibre optics, switches and DSL equipment, Satellites, Smartphones, cell phones and tablets, Telephones and mobile devices, Electronics and computer peripherals, Cable, set-top and DVR boxes, Routers, and modems, Mainframes and all other Office IT equipment. We also recycle and dispose batteries and power backups and banks.

Onsite Data Destruction

For those organizations with exceptional data security and regulatory compliance needs, we provide on-site data destruction services. As soon as retired electronic equipment leaves a company's premises, any intact data residing on that equipment becomes vulnerable to exposure and can subject that company to a potential data breach incident. This is because companies remain responsible for the security of collected data even after the donation, retirement, or sale of the equipment containing that data. This service requires proper planning and we take the client through the procedure for this before we commence.

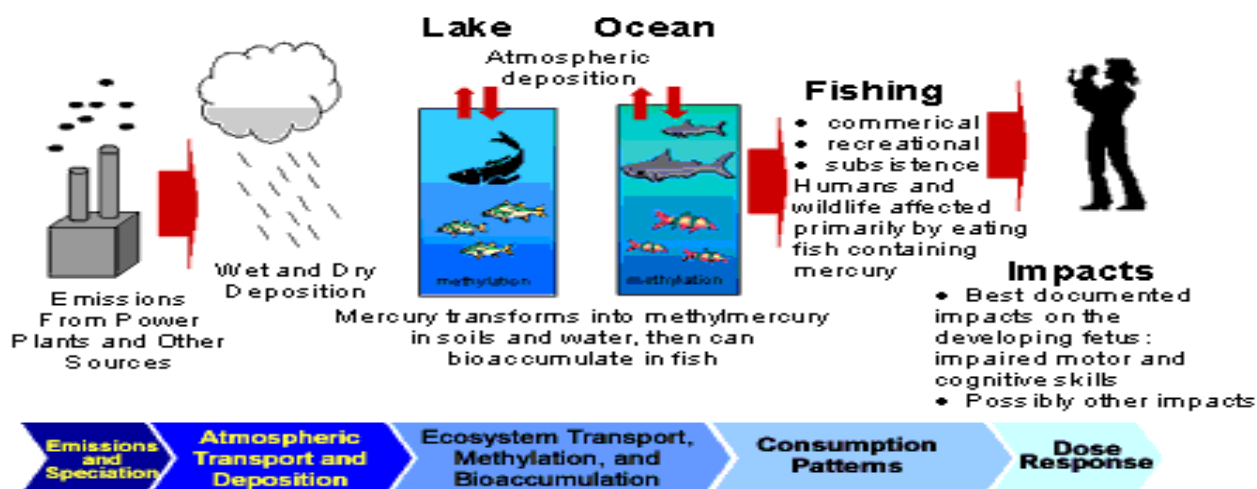
Data Capture

Our iWitness is an end-of-life documentation tool for IT destruction. The iWitness software records the media and documents the erasure status. This information can be exported to a cross compatible CSV file and saved to a CDR or USB drive. We use this with our degausses, crushers, shredders and disintegrators. This captures relevant information related to the Equipment before destruction e.g. Serial number, manufacturer, date of manufacture, User, etc.

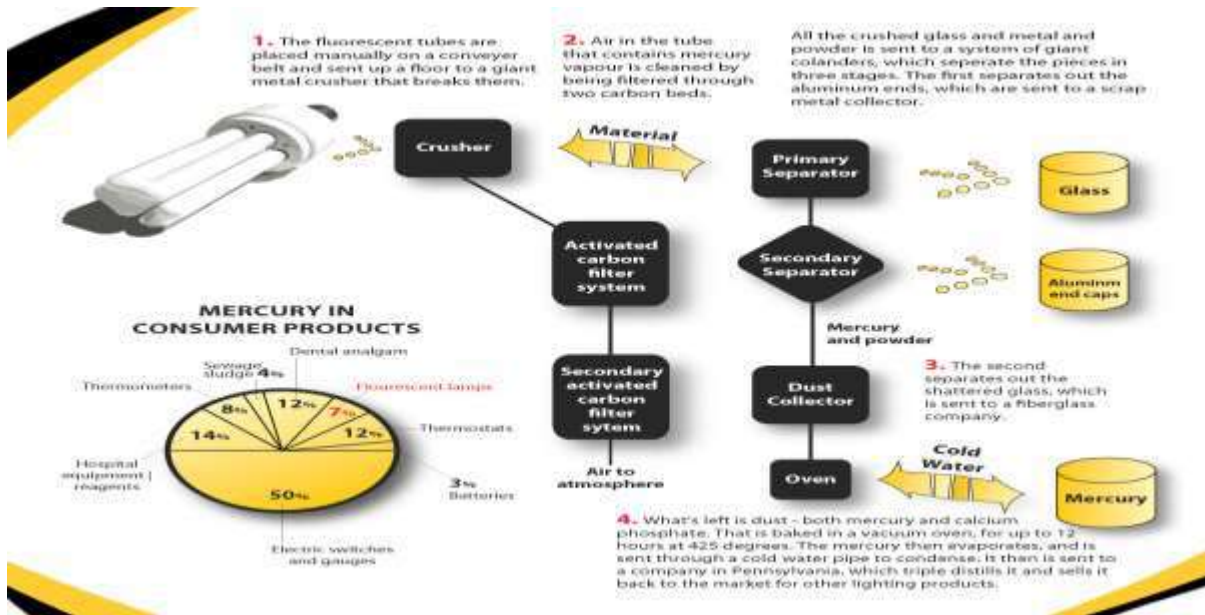
This year, we will be converting ARF into a full-fledged recycling facility named Smart Waste Zero Waste where we will process all types of waste (Municipal, Commercial, Industrial and Residential), using our Integrated Waste Management Approach where we have a well laid down procedure, system and Process flow that will ensure that nothing goes to waste. This will be accomplished by setting up multiple recycling lines and conversion of unrecyclable into feedstocks for Energy generation and leachates for construction.

PHOTO GALLERY FOR E-WASTE

When elemental mercury is released into the environment from E-waste, it will eventually be precipitated out of the atmosphere and can be converted to methyl-mercury which accumulates in the food chain, potentially leading to adverse health effects, such as impaired neurological development of fetuses, infants, and children. Ingestion of contaminated fish is the primary route through which most humans are exposed to mercury. See Below Fig 1.



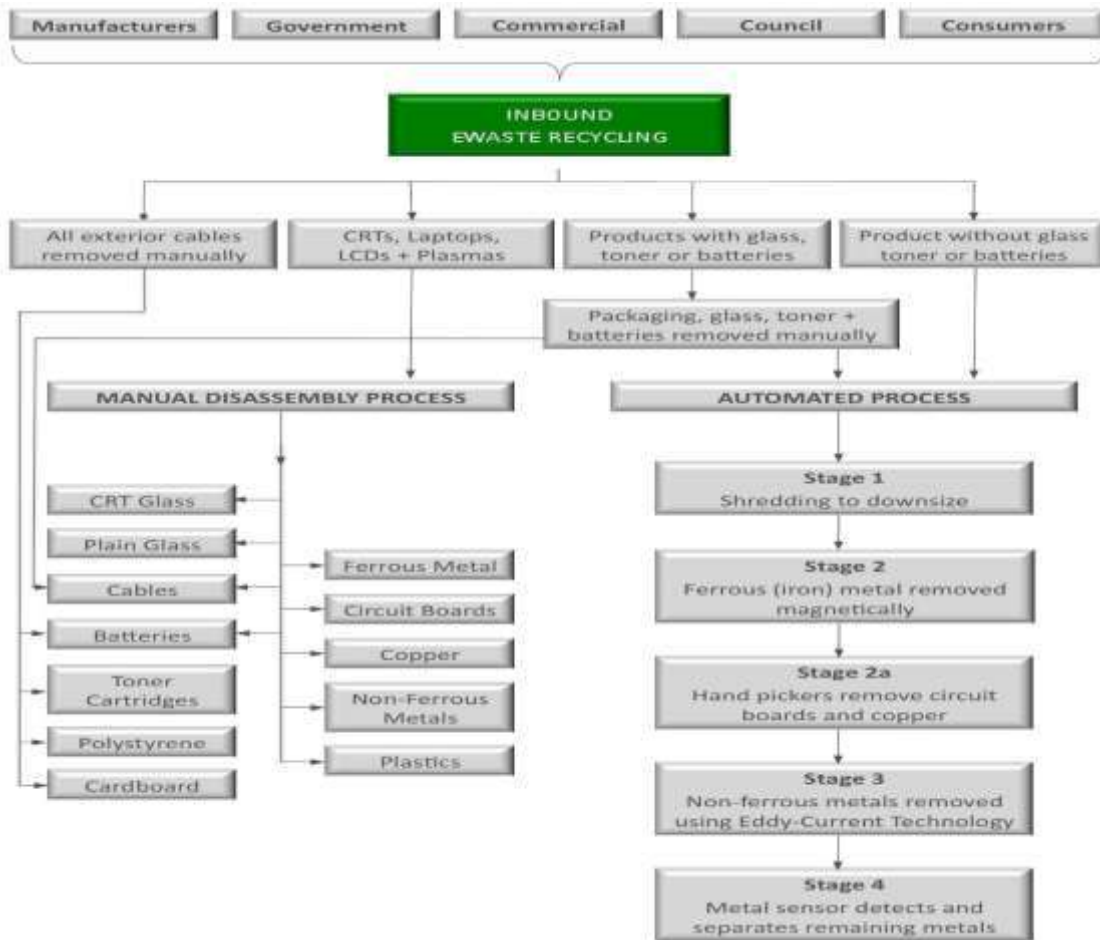
BULBS RECYCLING CYCLE FIG 2



ONSITE DATA DESTRUCTION FIG 3



RECYCLING FLOW CHART



RECYCLING PLANT AND EQUIPMENT AT ARF



Local, Regional and International Clients

CLIENTELLE

Sintmond Group Ltd has offered supplies and services within our range to the following clients, either as main contractor or subcontractors:

Kenya Pipeline, Kenya Power, Mumias Sugar Co, Unilever Ltd, Sotik Tea, GlaxoSmithKline, Greatwall Drilling Co, Goldrock Engineers, Histoto Ltd, Sisibo tea Ltd, PEERAJ Ltd, NDT Middle East among others.

We have served regional clients in Ethiopia (Ghion Gas Ltd, Merrific Iran) and Tanzania TPC sugar co.Ltd.

CORPORATE SOCIAL RESPONSIBILITY

Sintmond Group Ltd gives back to the society through education and other social related services through the Seek N Find Foundation, which is run by the company directors. So far we have seen more than 200 needy students go through their secondary and university studies.

CONTACTS

For more details:

Head Office: 573 kikwata, Imara Daima, off Mombasa road.

Operations: Block 5, Opposite City Cabanas, Off Mombasa road

P.o Box 11804 - 00100,

Nairobi - Kenya

Tel: +254 - 020 - 2489268

Email: info@sintmond.com

Website: www.sintmond.com